

Total No. of Questions : 4]

SEAT No. :

P1338

[Total No. of Pages : 2

[5157] - 4003
S. Y. B. Arch. (End Semester)
BUILDING SERVICES - II
(2015 Pattern)

Time : 3 Hours]

[Maximum Marks : 70

Instructions to the candidates:

- 1) All questions are compulsory.*
- 2) Draw neat diagrams wherever necessary.*
- 3) Assume suitable data wherever necessary.*
- 4) Answers to the two sections should be written on separate answer books.*
- 5) Figures to the right indicate full marks.*

SECTION -I

Q1) Explain Direct and Indirect lighting and give at least two examples of application of each in different spaces. **[15]**

OR

Explain three methods of garbage disposal at town level.

Q2) Write short notes on (any 4):

[20]

- a) Plate earthing
- b) Electric meter board of a house
- c) Concealed wiring system
- d) Day Light factor and components of Day Light
- e) Vermicomposting for a residential building
- f) Rain water harvesting

P.T.O

SECTION -II

Q3) What is refuse chute? Explain with sketches a refuse chute system for a hotel building. [15]

OR

Draw an electrical Layout with a schedule of switch boards for a doctors' consulting room shown in attached figure to indicate following:

- a) General and task lighting points
- b) Fan/s
- c) A/C
- d) Computer and printer point with Wifi connection.
- e) Plug points for equipments used for checking patients.

(Draw only proportionate sketch in the regular answer sheet)

Q4) Write short notes for any 4 with sketches wherever necessary. [20]

- a) Lightening conductor
- b) Lumenmethod for calculating no. of Fittings
- c) Fluorescent lamps
- d) Open wiring system for a house
- e) MCB
- f) Disposal of Hazardous waste

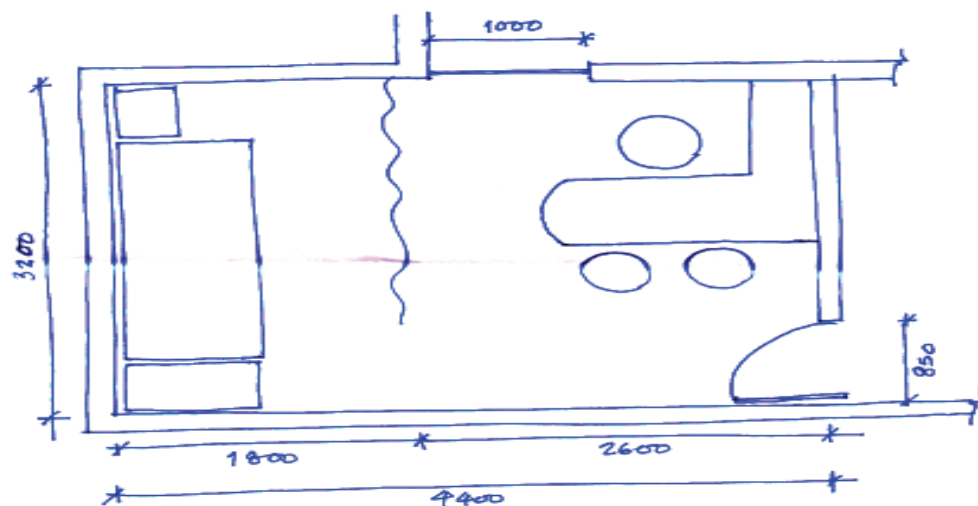


FIGURE FOR Q3: DOCTOR'S CONSULTING ROOM.

